

Outfitting Canoes for Camping

Many of these ideas are useful on
Inflatable Kayaks (IKs) or other boats.

Presentation by Richard Ferguson for Poudre Paddlers. Nov. 12, 2020

Goals

- Everything tied to the boat. Assume that you are going to flip.
- No entrapment hazards
- Easy access to what you need during the day, such as lunch, maps, and a raincoat



Water bottle in mesh bag, attached to boat



Map in map case, clipped to lacing

D-Rings

- Glue onto boat
- The glue needs to match the boat material.
- Vyna-bond is no longer available.
- Polyethylene is difficult to glue
- Contact Cement is one option.
- Urethane Glues are reportedly good, but pricy.
- Gluing is experimental.
- Follow glue instructions
- Mark where you want to place the D-ring.
- Prep with solvent (acetone or alcohol) and medium (120 grit) sandpaper
- Allow 24 hours for glue to dry
- Test before the trip



D-rings for Tandem

- This is a typical arrangement of D-rings for a tandem canoe, 4 D-rings on each side.



Straps

Preferred straps are 1 inch wide, with a spring loaded buckle.

NRS is the most common brand.

Can use rope, but not convenient or fast.



Dry Bags

- You need dry bags even if you don't flip; there is usually some water in the bottom of the canoe.
- Dry bags are really semi-dry bags. Anything you must keep dry should be triple bagged.
- Some people like barrels instead of dry bags.
- Shoulder straps are nice for hauling gear from the river to the campsite.



Green dry bag clipped to thwart and held down by blue strap.

Tie gear to thwarts

- If you don't have D-rings, the thwarts are a reasonable alternative.



Loading your boat

- It is best to have the heavy gear as close to the center of the boat as practical.
- It is best to have all the gear below the gunnels (gunwales).
- Generally trim boat slightly bow high, unless you are facing a headwind. If the wind is turning the boat left or right, it may be time to retrim to move weight forward. Trim often needs to be adjusted during a trip, as food is eaten, etc.

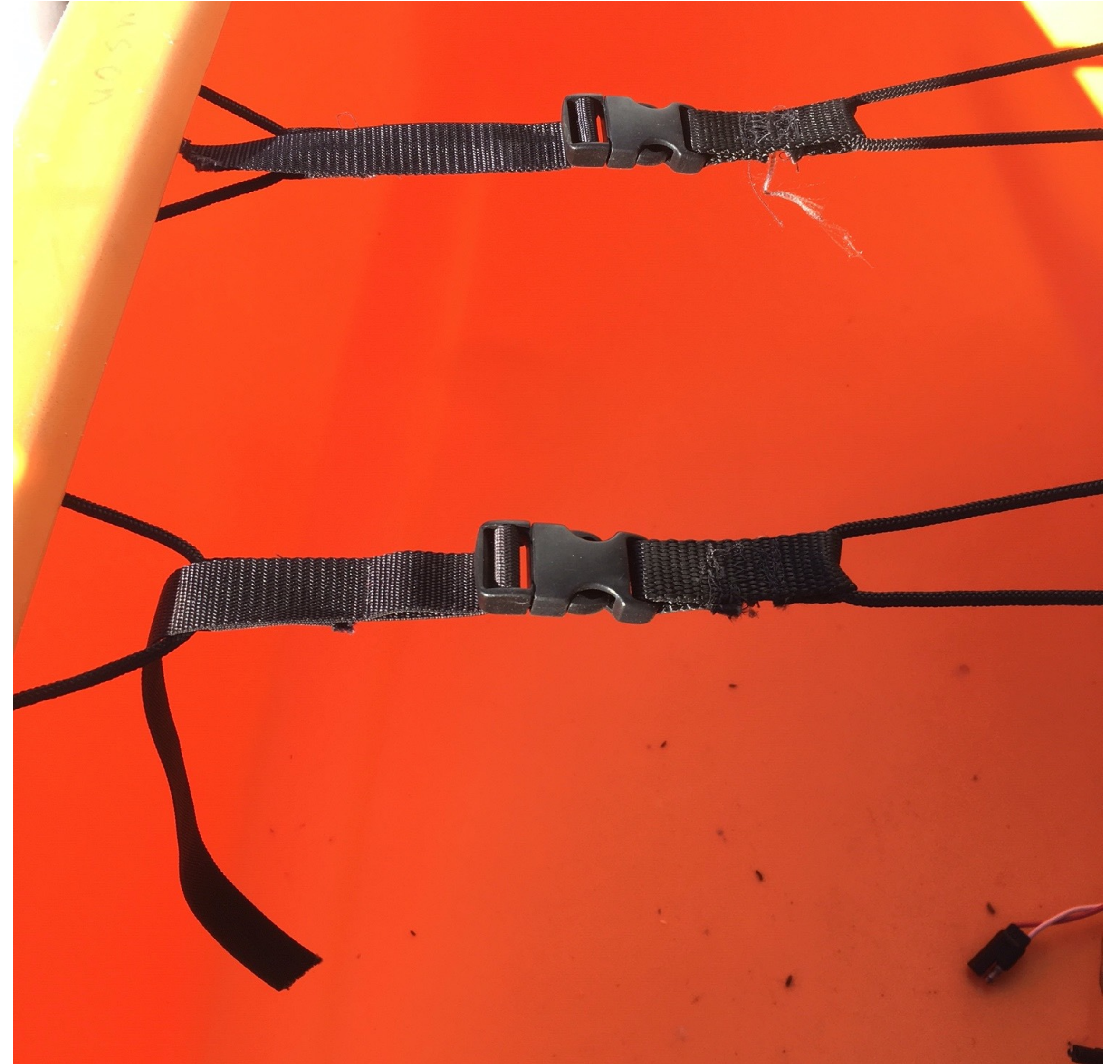


Photo courtesy of canoeingbc.com

Lacing

What is lacing? Why?

- Lacing is done with small strings, typically 1/8" diameter, that go from gunnel to gunnel.
- Mostly used to secure air bags, but can secure other things
- I use quick-connect buckles for easy access.



Quick release buckles for lacing

P-clips for Lacing

- Drill out rivet on gunnel
- Slip P-clip between gunnel and hull
- Install a new pop rivet
- Very clean look; you can hardly see them.
- One alternative is to drill holes in the hull right below the gunnel.
- More options with wood gunnels.



P-clip

Holes for Lacing

- Drill holes right under the gunnel
- Pass lacing through the holes.



Black lines are lacing, holes right under the gunnel

Entrapment

Entrapment in this context means that you could become tangled in your equipment or straps, potentially very dangerous.



www.clipartof.com · 1048043

Entrapment Hazard

- What you see is that the rope attaching the bail bucket is wrapped around my leg.
- Long tethers are dangerous, as someone could get tangled with them when the boat flips.



Right

- Note that the bail bucket is clipped to a D-ring on a short strap.
- This bucket can be unclipped, or the strap lengthened enough to bail without unclipping.



Carry Yoke

- Handy when you need to move a canoe by yourself.
- For long carries, a padded carry yoke may be helpful.
- Most canoes come with one, but you can buy one and install it. There are even removable clamp on carry yokes.



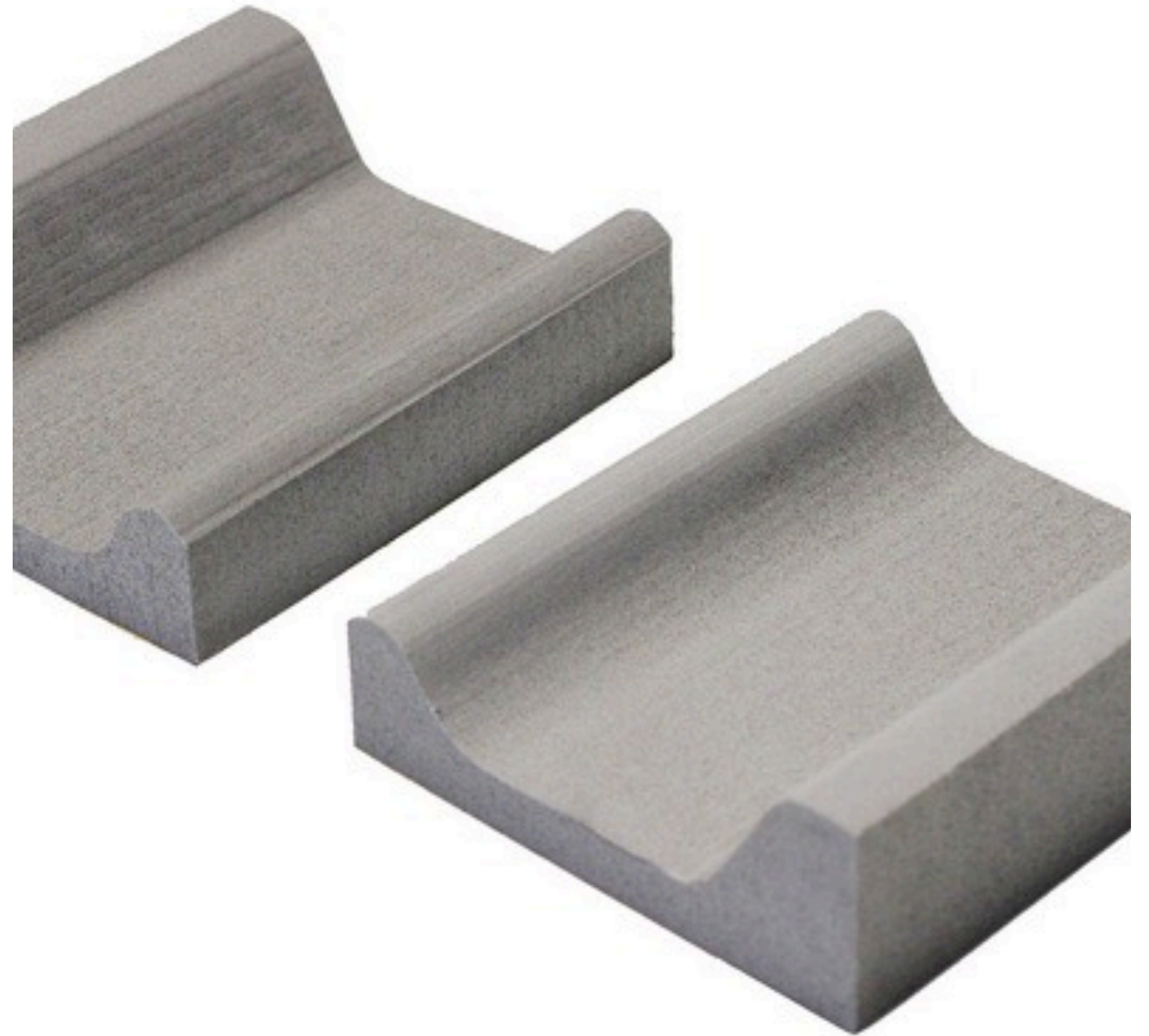
Painter

- A painter is a rope tied to each end of the boat, so you can tie your boat to a tree, or maneuver it around an obstacle.
- The length of the painter should be the boat length plus three feet. I suggest 3/8 inch diameter. If you are lining a boat you will want long painters.
- The painter should not be loose, as that will be an entrapment hazard. Secure it with shock cord or velcro for quick access.



Other items

- Knee pads are good, glued to bottom of boat. Kneeling is a much more powerful position and more stable than sitting on the seat.
- Padding for the seat
- Back for seat. I would avoid this unless you need it; it is better to have your hips loose when the boat tips due to wave or rocks.



Knee pads by Northshore

Other items

- Duct tape for canoe repairs
- Spare paddle, secured to boat
- Glasses on straps.
- Canvas boat cover if you store outside.
- Always tie your boat to something on shore, especially when empty.



Rack for Car

- Use straps to secure boat to roof rack. 12 feet works for most boats.
- Tie bow and stern to front and rear of car. Note the front straps form an inverted V, which minimizes side to side motion.



Thanks to outdoorcanada.ca for the photo

Hood loops

- A good way to tie down the front of the boat.
- They bolt to the fender bolts, and fold out of sight when not in use.



Questions? Comments?

Thanks for participating.

Presentation by Richard Ferguson for Poudre Paddlers. November 12, 2020